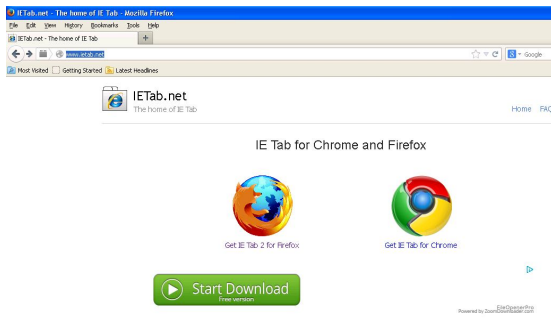


IE Tab Guide


IE Tab is an extension for the Mozilla Firefox and Google Chrome which allows users to view pages using the Internet Explorer (IE) layout engine. This allows Hisco DVR users to be able to fully access Hisco DVR functions, Multi-channel view and Search, like Internet Explorer. IE tab is only available on windows OS.

IETab.net


1. Go to www.ietab.net to download IE Tab
2. Choose your Internet browser
3. Add the IE Tab extension on the browser

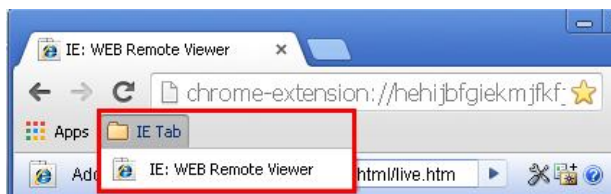


Google Chrome

1. After install the IE Tab,  Icon will be on Menu bar.
2. Open IE Tab on Chrome clicking the Icon
3. Type DVR IP Address/DDNS and port (<http://XXX.XXX.XXX.XXX:8080> or <http://<ddnsname>.DVRLINK.NET:8080>) on IE Tab



4. To bookmark the DVR address, click  Icon. It will create the link under IE Tab folder on the bookmark list.



Mozilla Firefox

1. Go to **IE Tab Options** under **Tools** on Menu bar
2. Add DVR IP/DDNS and port (<http://XXX.XXX.XXX.XXX:8080/>* or <http://<ddnsname>.DVRLINK.NET:8080/>*) on IE Tab Options.
3. Type DVR IP/DDNS and port on Firefox URL to connect to DVR

